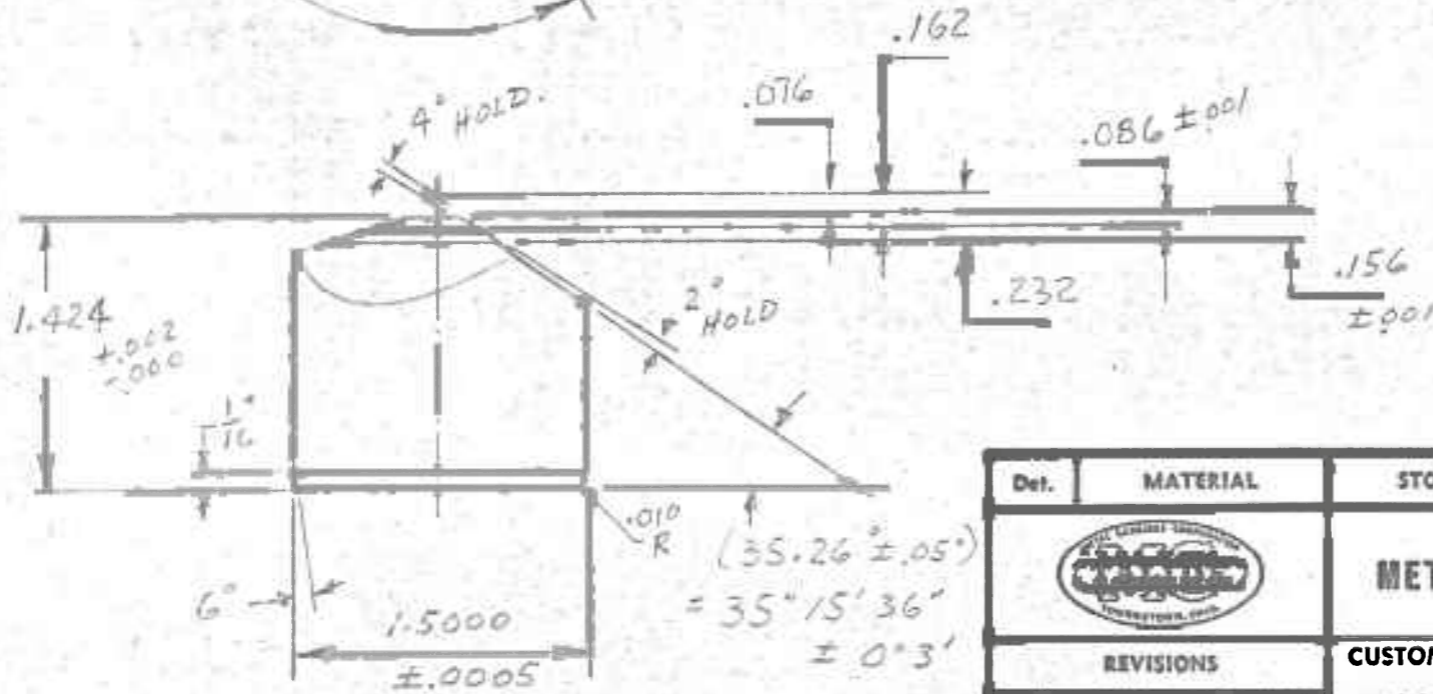

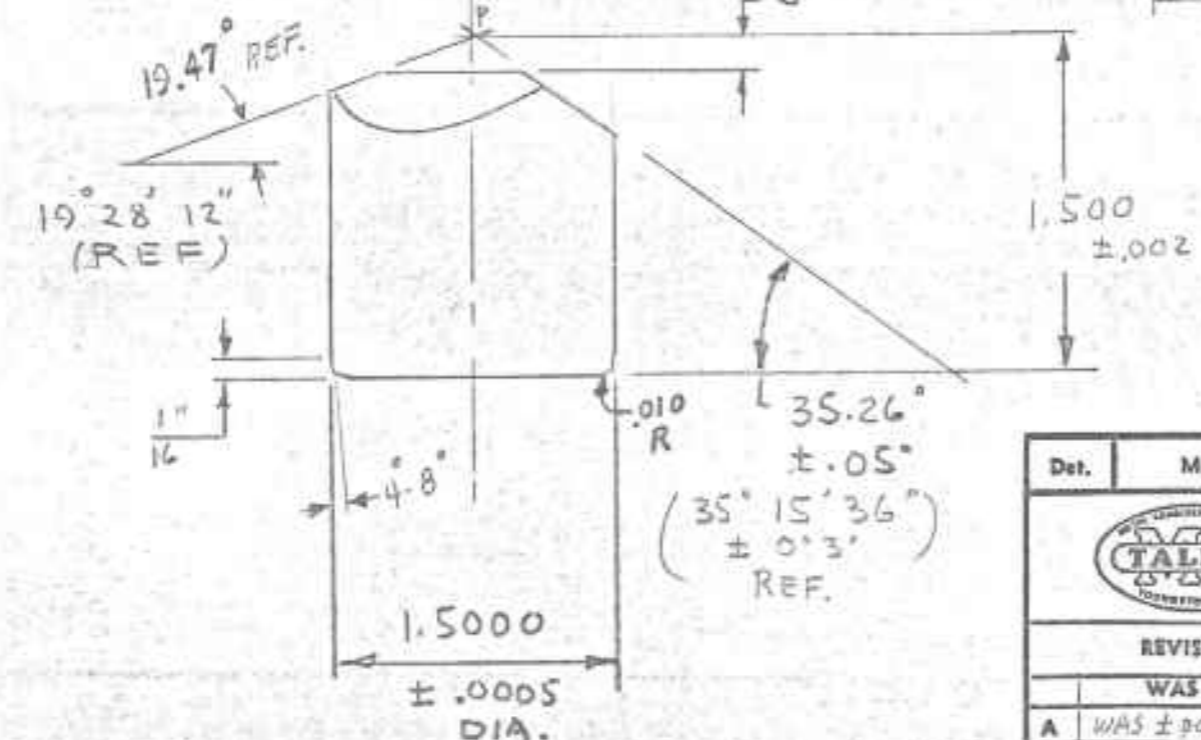
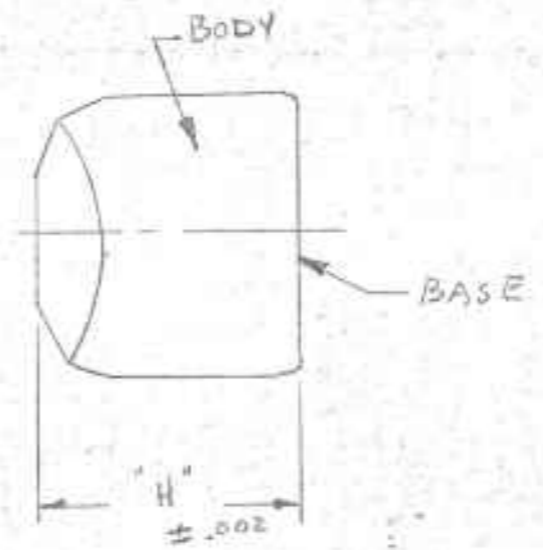
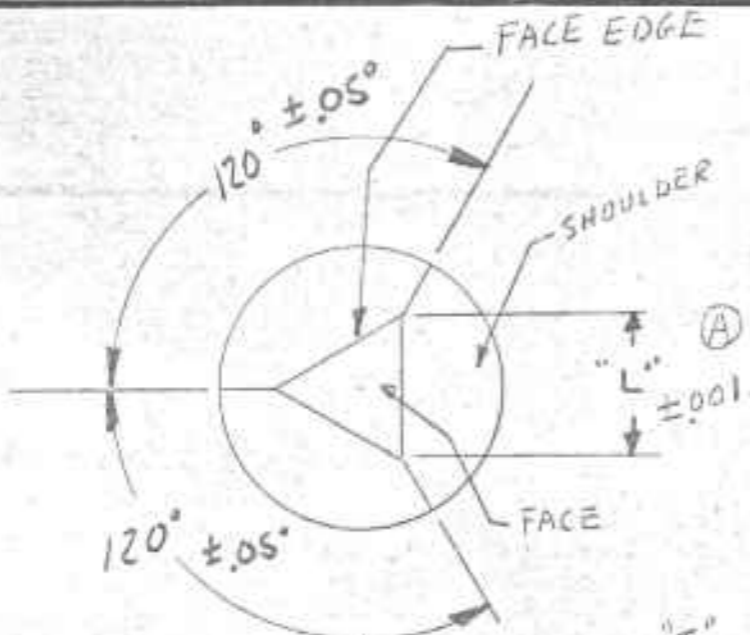


NOTE: 100 GRIT FINISH ALL OVER.




PER CUST SAMPLE REC'D 3/19/65  
 ALSO REFER TO M.C.P. DWG B-7640  
 (S.O. B-51103 R-714 C-91) SAMPLE

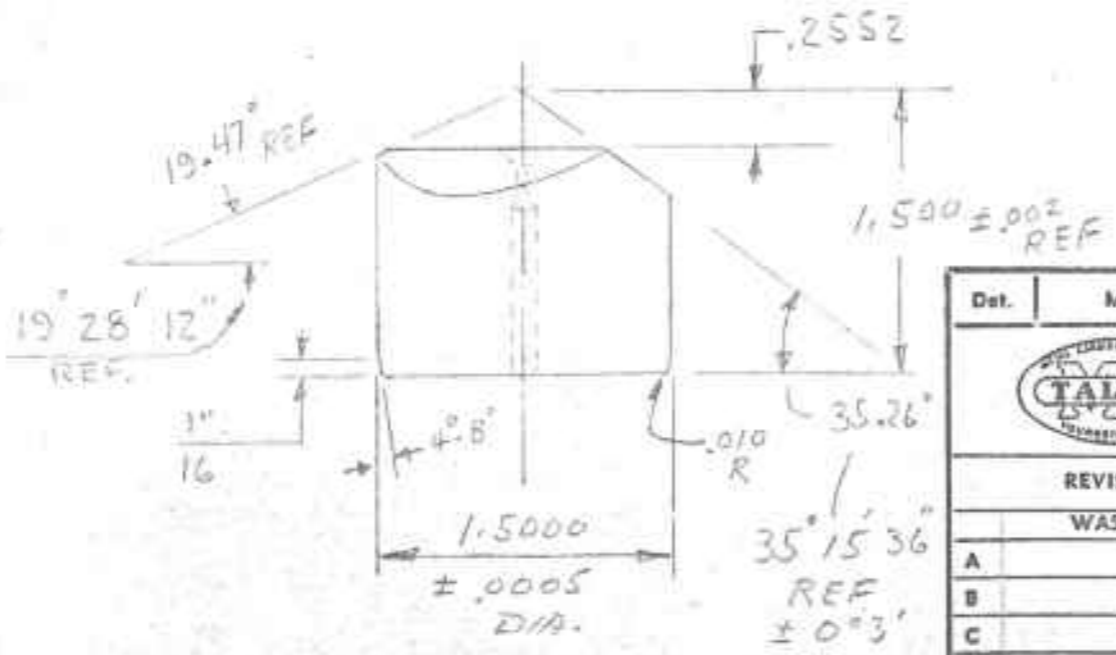
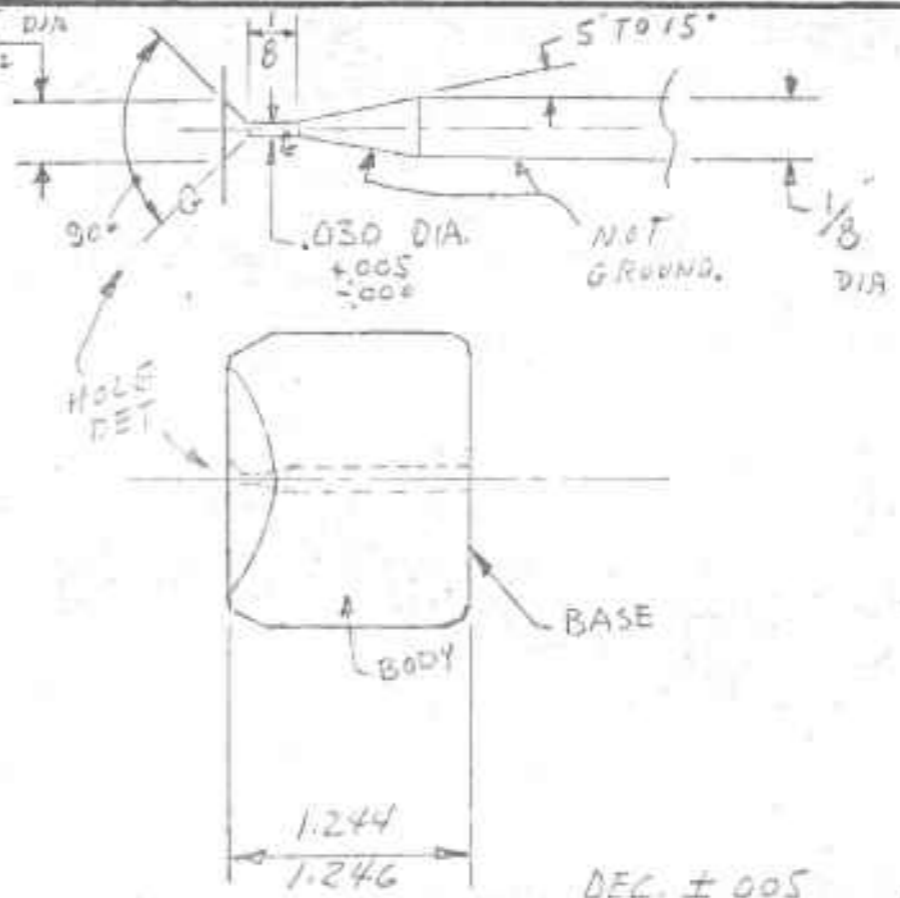
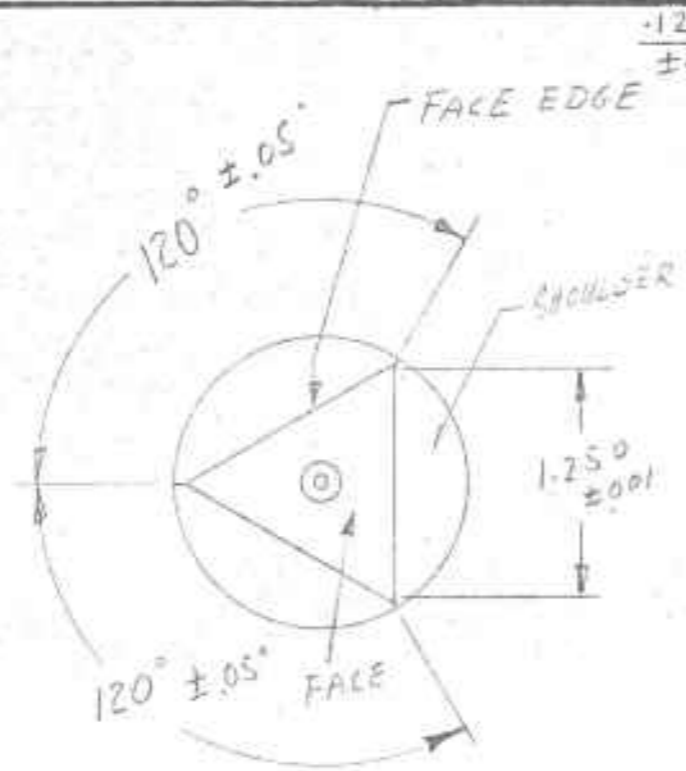
Det.	MATERIAL	STOCK SIZE	REMARKS	No. Rec'd
			ENGINEERING DEPARTMENT METAL CARBIDES CORPORATION YOUNGSTOWN, OHIO	
REVISIONS		CUSTOMER BRIGHAM YOUNG UNIVERSITY		
	WAS	TITLE		
A			ITEM SOLID ALIDE E	
B			TETRAHEDRAL ANVILS.	
C				
D			Date 3/22/65	
E			Drawn C.R. Scale FULL Print No. A-8094	



"L" DIM	"J" DIM	"H" DIM
.5000	.1021	1.3979
<u>.7500</u>	<u>.1531</u>	<u>1.3469</u>
1.0000	.2041	1.2959


NOTE: ALL SURFACES TO BE 100 GRIT.  
PER. H. T. HALL DWG OF 9/19/62

Det.	MATERIAL	STOCK SIZE	REMARKS	No. Req'd
			ENGINEERING DEPARTMENT METAL-CARBIDES CORPORATION YOUNGSTOWN, OHIO	
REVISIONS		CUSTOMER		
	WAS	DATE	BRIGHAM YOUNG	
A	WAS ±.002	11/17/64	ITEM SOLID TETRAHEDRAL ANVILS	
B				
C				
D				
E				
	Date	Drawn	Scale	Print No.
	1/9/64	C.R.	—	A-7866



DEC. ± 005  
FRACTIONS = 1/4  
UNLESS NOTED OTHERWISE

H.T. HALL DWG OF 9/13/62

Dat.	MATERIAL	STOCK SIZE	REMARKS	No. Req'd
			ENGINEERING DEPARTMENT METAL CARBIDES CORPORATION YOUNGSTOWN, OHIO	
	REVISIONS		CUSTOMER	
	WAS	DATE	BRIGHAM YOUNG	
A			ITEM	
B			SOLID TETRAHEDRAL	
C			ANVILS	
D			Dat:	
E			Drawn	
			Scale	
			Print No.	
			4/1/65	
			C.R.	
			Full	
			8 2:1	
			A-8101	